



Low range Profibus non-intelligent Network Interface card running MPI/S7 protocols up to 12 Mbps.

05 Aug. 05
DW200593

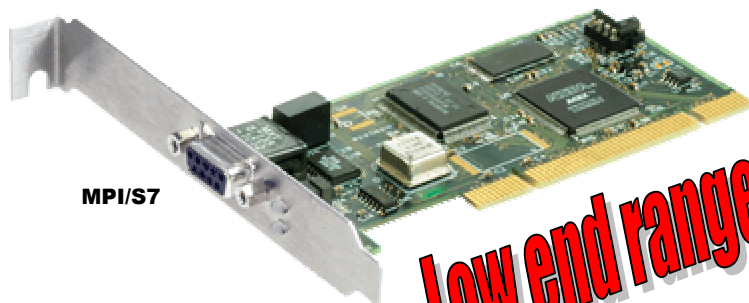
Direct-Link™ PCU100PFB

Features

- **Low end product based on non-intelligent Network Interface Card**
- **Ready to plug, no hardware setting**
- **Manage Profibus client S7/MPI (console outlet) protocol for Siemens S7-300 or S7-400 PLC**
- **Profibus speed: 9.6 Kbps up to 12 Mbps**
- **Universal PCI card with both 3.3V and 5V signaling (PCI-X compatible)**
- **Software Interfaces:**
 - OPC Server (Data Access v1.0a, v2.05 and 3.0)**
 - Wonderware DAServer**
 - Wonderware I/O Server (SuiteLink, FastDDE)**
 - ActiveX Control**
 - DLL library 32-bits (on request)**

Supported OS

- **Windows XP / 2000 SP3 / NT4 SP6**



MPI/S7

Low end range



Description

Direct-Link™ is a low range of automation components for industrial communication. It includes a variety of products such as diagnostic tools, intelligent connectors, tunneling gateways, dedicated fieldbus cards, and software drivers for industrial networks.

Simple as they are affordable, Direct-Link™ products allow you to acquire the equipment to develop your architectures and industrial applications at a lower cost.

Direct-Link™ is characterized by its simple use and fast implementation. The solutions are modular and scalable. Moreover, the products are designed to be easily embedded in computerized systems and are available in a wide selection of form factors.

Particularly, Direct-Link™ PCU100PFB product is based on a non-intelligent 12 Mbps interface card that is especially designed to communicate with Siemens S7-300 or S7-400 controllers set on a Profibus network. Direct-Link™ PCU100PFB suits perfectly to applications requiring few CPU resources (for more powerful data through and large application, see applicom® product ranges)▲

Woodhead is a member of PTO (PROFIBUS Trade Organization), PNO (PROFIBUS Nutzerorganisation e. V.) and France Profibus.

**DIRECT
LINK™**

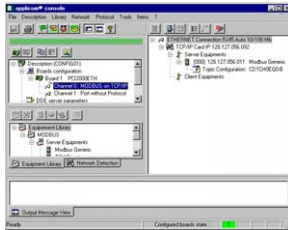
W Woodhead

Direct-Link™ PCU100PFB

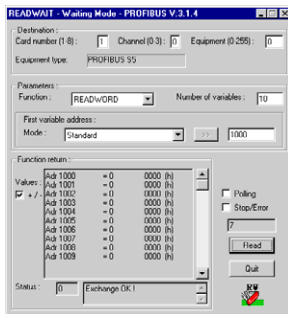


Software tools

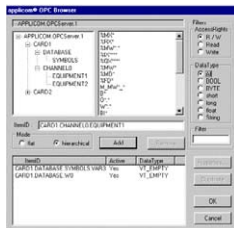
The core of Direct-Link™ PC Network Interface cards lies in effective software tools enabling fast integration of industrial communication into your applications.



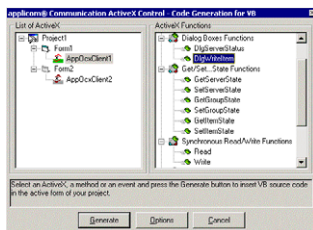
Configuration and diagnostics



Testing tools



OPC Browser



ActiveX Control

Technical data

Unit	PCI rev 2.2, 32-bit, 33 MHz, PCI Universal 3.3V/5V keying, PCI-X compatible
Network Asic	Siemens ASPC2
Memory	SDRAM: 128 Kbytes DPRAM: 512 Kbytes
Dimensions (L x W)	120mm x 55mm (4.73" x 2.17") without bracket
Consumption	1 W (5V)
Operating Temperature	0° C (32° F) up to +65° C (149° F)
Storage Temperature	-40° C (-40° F) up to +85° C (185° F)
EMC Compliance	EN55022 Class B, EN61000-6-2, EN61000-3-2, EN61000-3-3

1 Profibus port

Port type	Profibus port (EN 50170)
Connector type	9-pin Sub-D female
Electrical Interface	RS485 with galvanic insulation 500 V
Speed	9600 bps to 12 Mbps
LED indicators	2 bicolor leds: Bus fault, Communication status

Supported protocols

Protocols		Equipments
Profibus	MPI/S7 Master	Siemens Simatic S7-300, S7-400

Ordering information

Part Number	Description
DRL-MPI-PCU	Direct-Link™ Profibus 12 Mb card, PCI 3.3V / 5V (PCI-X compatible)