



v1 – Nov. 2003

applicom[®], « All-in-One » industrial communication solution for profibus network including intelligent network interface card (Universal PCI 3.3V/5V), software tools (configuration, diagnostics, OPC Server...) as well as a vast choice of protocols.

applicom[®] PCU1500PFB PCU1500S7



Features

- 1 Profibus port 1.5 Mbps
- 2 offers :
 - **PCU1500PFB : simultaneous management of protocols: DP, MPI/S7, FDL for S5, PPI/PPI+, FMS (upon request), Send/Rec on FDL**
 - **PCU1500S7 : simultaneous management of protocols: MPI/S7, PPI/PPI+, Send/Rec on FDL**
- 9-pin Sub-D female connector with galvanic insulation 500 V
- Universal PCI card with both 3.3V and 5V signaling (PCI-X compatible)

OS supported

Standard Product

- Windows 32-bits (XP / 2000 SP3 / NT4 SP6)

Free Telechargement

- Windows XP embedded, VenturCom RTX, VxWorks, QNX, Linux, Dos

Woodhead is a member of PTO (PROFIBUS Trade Organization), PNO (PROFIBUS Nutzerorganisation e. V.) and France Profibus



Overview

applicom[®] is a range of intelligent communication solutions, complete and ready to use covering more than 40 protocols among a wide choice of industrial networks and fieldbuses: Ethernet TCP/IP, Profibus, Modbus Plus, Data Highway, WorldFIP and serial links. These solutions connect your PC-based application to industrial equipment (programmable controller, I/O modules, devices...).

The applicom[®] software package includes:

- Graphical configuration software.
- Test and network diagnostic tools.
- Data servers (OPC v1.0a v2.05, DDE, FastDDE, SuiteLink).
- Software components (ActiveX Control, NI LabVIEW/VI)
- Common development libraries (DLL, Static Library, VenturCom RTSS, NI LabWindows/CVI) for programming environments such as Microsoft .NET/C#/VB/C++/C, Borland Delphi, National Instruments,...

Thanks to smart technology, all applicom[®] communications processors are able to execute all management and the processing (polling, frame management, etc.) of communications protocols, resulting in extremely fast, efficient application performance.

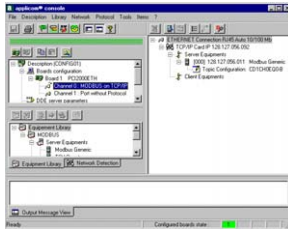
Particularly, applicom[®] PCU1500PFB and PCU1500S7 cards are equipped with a powerful x86-based microcontroller and a High-Performance PCI controller.▲

applicom® PCU1500PFB PCU1500S7

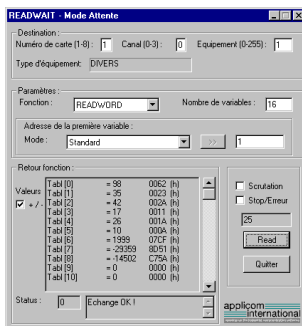


Software tools

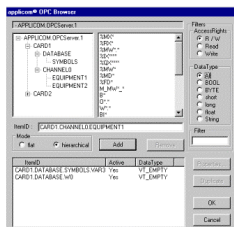
The core of applicom® solutions lies in effective software tools enabling fast integration of industrial communication into your applications



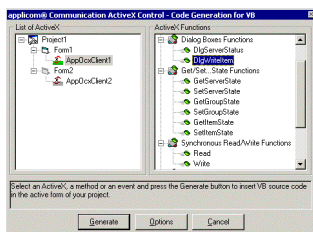
Configuration and diagnostics



Testing tools



OPC Browser



ActiveX Control

Technical data

Bus interface	PCI rev 2.2, 32 bits, 33 MHz, PCI Universel 3,3V/5V (PCI-X compatible)
Processor	AMD SC520 - 133 MHz
Memory	8 Mbytes SDRAM
Flash Memory	1 Mbytes
Supported Interrupts	Hardware Plug&Play
DPRAM Address	Hardware Plug&Play (32 Kbytes used per board)
Discrete Input	Opto-coupled discrete input, Voltage -> +10 à +30 DC or 24 V AC (50-60 Hz)
Discrete Output	« WatchDog » output contact free from potential, (floating) (24V DC, 0.25A)
Dimensions (L x W)	175mm x 107mm (6.89" x 4.21")
Consumption	5.5 W
Operating Temperature	0° C (32° F) up to +65° C (149° F)
Storage Temperature	-40° C (-40° F) up to +85° C (185° F)
EMC Compliance	EN55022 Class B, EN61000-6-2, EN61000-3-2, EN61000-3-3
1 Profibus port	
Type	Profibus port (EN 50170)
Connector type	Profibus 9-pin Sub-D female
LED indicators	2 leds - TX/RX
Electrical Interface	RS485 with galvanic insulation 500 V (optional : Profibus D-Sub 9-pin attach vertical connector with diagnostics -Brad Harrison-)
Speed	from 9600 bps to 1,5 Mbps

Supported Protocols

	Protocols	Equipments
Profibus	DP Master Classe-1, Classe-2 ⁽¹⁾	All DP-slave devices
	FMS Client/Server ^{(1) (2)}	All FMS devices
	FDL for S5 Master ⁽¹⁾	Siemens Simatic S5
	MPI/S7 Master	Siemens Simatic S7-300, S7-400
	PPI+/PPI Master	Siemens Simatic S7-200 (progr. port)
	Send/Receive on FDL	Send/Receive free requests on Profibus FDL
(1) Only on PCU1500PFB card		(2) On request, contact us

Ordering information

Model	Part number	Description
PCU1500PFB	APP-PFB-PCU	applicom® Full Profibus 1.5Mb card, PCI 3.3V / 5V (PCI-X compatible)
PCU1500S7	APP-PS7-PCU	applicom® Profibus dedicated Simatic S7 1.5Mb card, Universal PCI 3.3V / 5V (PCI-X compatible)